



# AUTOMATIC CROSSCUT SAWS



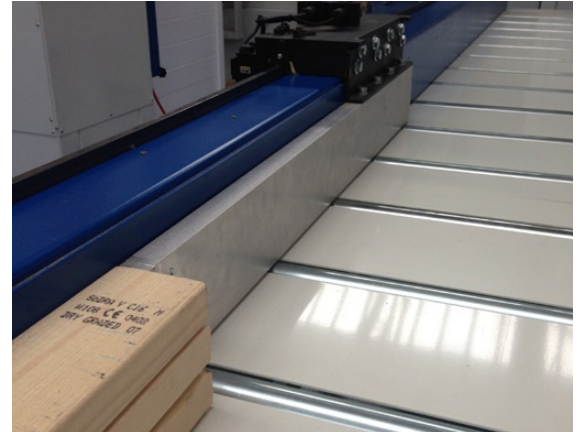
**JJ SMITH**

[www.jjsmith.co.uk](http://www.jjsmith.co.uk)

## HM-D

The HM-D is a fully automatic straight upstroke saw for fast and accurate cutting of both single and multiple parts simultaneously. The pusher is driven via a maintenance-free rack system, suitable for heavy loads and high speeds, it also features a 10° inclined table to keep boards against the fence. The system is equipped with the latest technology, for high-speed data processing in combination with a powerful industrial 19" touchscreen computer - standard across the range.

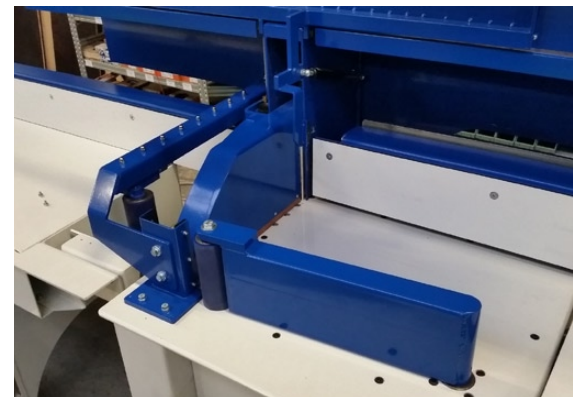
- Rack and pinion drive system
- AC drive with heavy duty gearbox
- 60m/min
- Pneumatic upstroke crosscut saw
- 7.5hp braked motor
- 550mm blade - 150mm cutting height
- Fully guarded and interlocked
- Industrial 19" touchscreen PC
- Network ready
- Office software for remote input of cutting list data
- Cutting patterns in sequence mode



## HM-HD

The HD solutions offers a larger 10hp motor, 650mm dia sawblade capable of cutting 200mm high with liftable pusher for quicker loading and an automatic waste trap for offcuts. With a dedicated PLC control unit this machine is ideally suited to repeat high volume production.

- Rack and pinion drive system
- AC drive with heavy duty gearbox
- Liftable pusher
- 60m/min
- Pneumatic upstroke crosscut saw
- 10hp braked motor
- 650mm blade - 200mm cutting height
- Automatic waste trap
- Fully guarded and interlocked
- Industrial touchscreen PLC
- Office software for remote input of cutting list data
- Cutting patterns in sequence mode



# HM-T ANGLEMASTER

A fully automatic push fed crosscut that can be programmed at the saw or accept downloaded cutting lists from any drawing software, enabling straight and angled components to be cut automatically. All movement are NC controlled and operate to an accuracy of 0.2mm. As standard the machine rotates between 30 -150 degrees with the option to increase an extra 12 degrees both directions. Creating sawing lists is very simple, the software's graphic interface allows the selection of a specific beam model, upon which the relevant measurements are keyed in. Cutting list can be optimised directly at the saw or in an offline environment and transferred via network or USB.

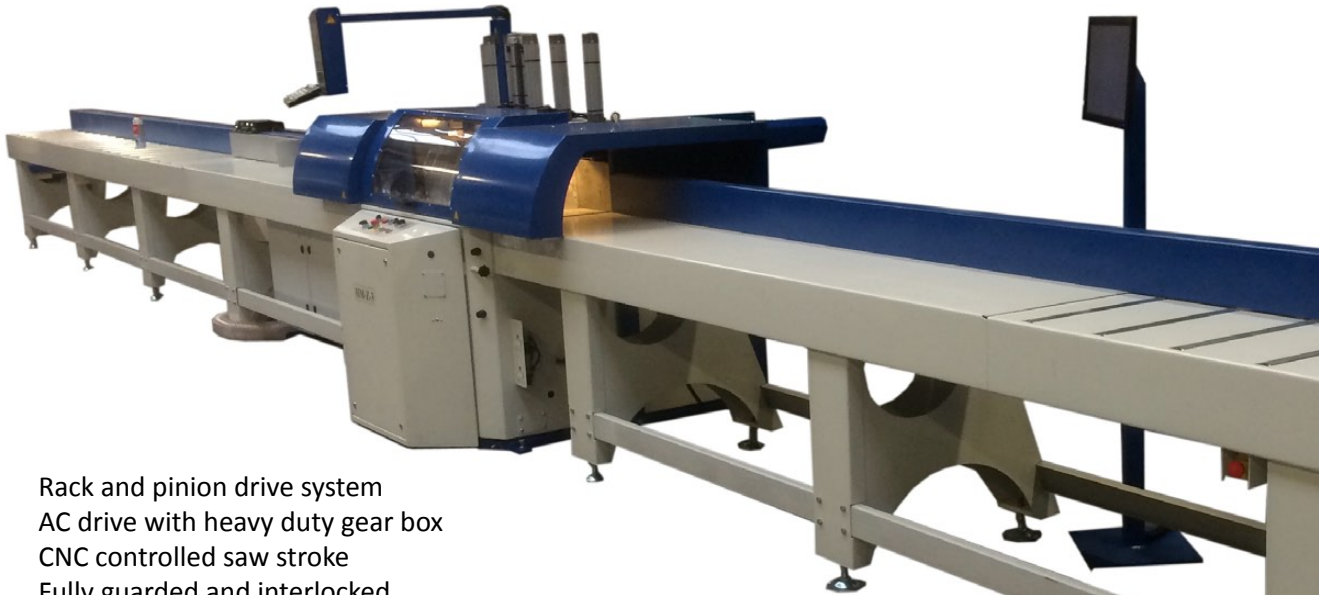


- Rack and pinion drive system
- AC drive with heavy duty gearbox
- Pneumatic upstroke crosscut saw
- Fully guarded and interlocked
- +/- 60° rotation
- 7.5 hp motor
- 550 mm saw blade diameter
- 160 mm maximum sawing height, 150mm width of cut at 60° rotation (60mm height)
- Accuracy 0.1 mm
- 65 m/min maximum speed
- Industrial 19" touchscreen PC
- Network ready
- Office software for remote input of cutting list data
- Cutting patterns in sequence mode
- Outfeed Monitor
- On board optimisation with import options from external packages

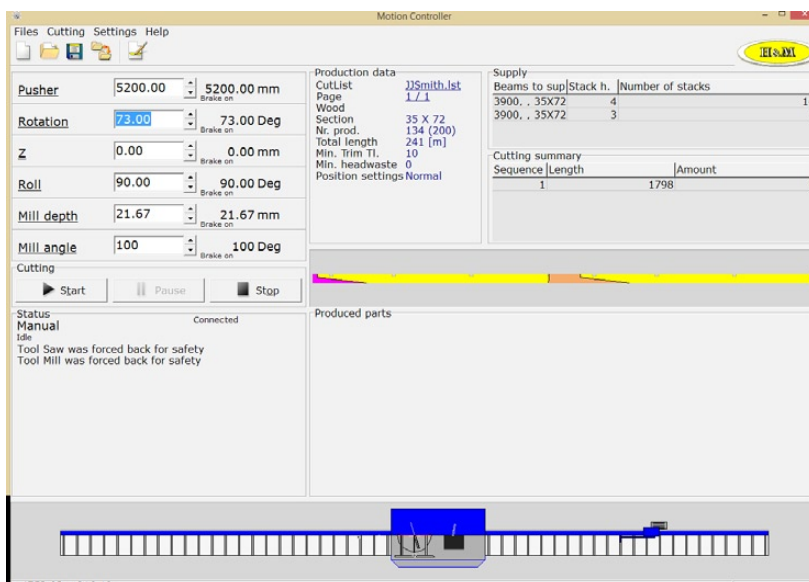
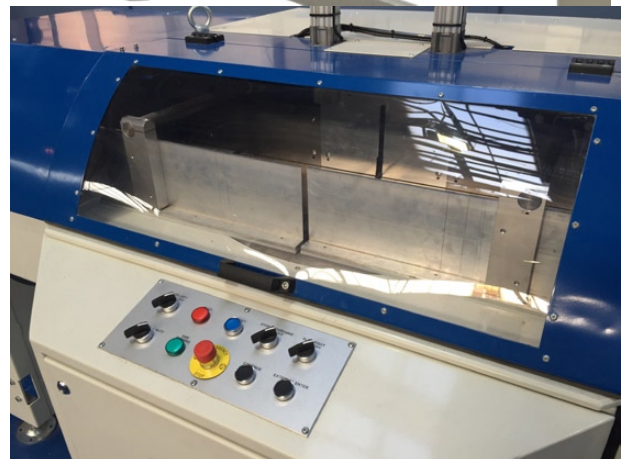


# HM-Z

The flagship model of the range features a 3rd axis controlled by CNC for complex centre line cutting applications. The fully automated 700mm diameter sawblade can rotate 180 degrees and also offers CNC controlled cutting height. With the optional 4th axis for compound cutting, the machine can also produce hip joints and birds mouths with ease. The machine can also be fitted with CNC notching head, drilling units and automatic infeed / outfeed systems.



- Rack and pinion drive system
- AC drive with heavy duty gear box
- CNC controlled saw stroke
- Fully guarded and interlocked
- 180° rotation
- 7.5 hp motor
- 700 mm saw blade diameter
- 250 mm maximum sawing height
- Accuracy 0.1 mm
- 65 m/min maximum speed
- AC motor
- 200mm centre line adjustment
- Industrial 19" touchscreen PC
- Network ready
- Office software for remote input of cutting list data
- Cutting patterns in sequence mode
- Outfeed Monitor
- On board optimisation with import options from external packages



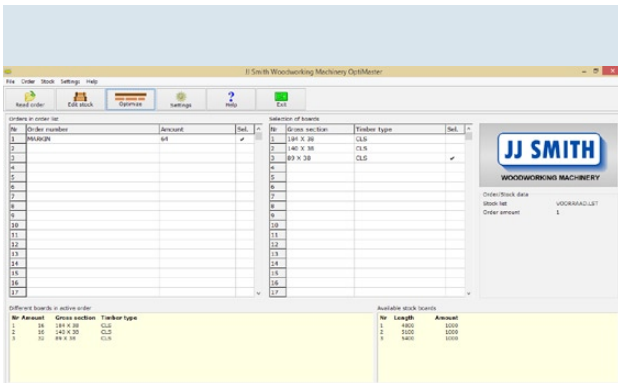
# OPTIONAL ADDITIONS



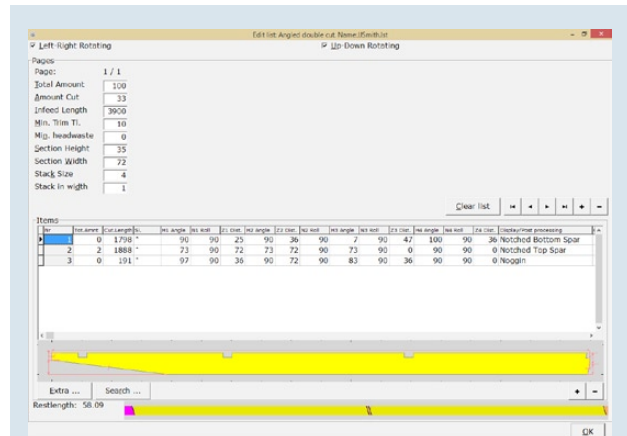
Routing Unit

HT - SH17-5 Plot - 48 First Floor	BCI 6000s 1.8 - 241mm Length = 4427mm Weight = 16.16kg 001
	<b>JJ SMITH</b> Woodworking Machinery Ltd Moorgate Road, Liverpool, L33 7DR, sales@jjsmith.co.uk tel: 0151 548 9000
◀ End Block	End Block ▶

Complex Label Printing



"Optimaster"  
Offline Programming



2 Axes Notching



Infeed Chains

JJ Smith offer an extensive range of manual and semi automatic cross cut saws for general joinery, furniture, timber frame, packing cases and pallet production. As the UK's leading supplier of cross cutting machinery they provide solutions from the smallest pull over saw to the fastest CNC automatic saw.

**A video playlist of the wide variety of solutions offered can be viewed here.**



**[www.jjsmith.co.uk/Pages/Crosscutting-Saws](http://www.jjsmith.co.uk/Pages/Crosscutting-Saws)**

**JJ SMITH**

**[www.jjsmith.co.uk](http://www.jjsmith.co.uk)**

**Moorgate Road, Knowsley Industrial Park, Kirkby, Liverpool L33 7DR**

**tel: 0151 548 9000 email: [sales@jjsmith.co.uk](mailto:sales@jjsmith.co.uk)**