

Buldog 3/5/7 ^{/EN}

WIDE BELT SANDERS

C. DAHM

MASKINFORRETNING AS



Nordåsdalen 10, 5235 RÅDAL- BERGEN

Tlf 55 11 24 70 Fax 55 11 24 71

firmapost@dahm.no

www.dahm.no

 **HOUFEK**



WORKING
UNIT

Buldog 3 Wide belt sander

Buldog 3		R 650 C 650	R 950 C 950	R 1100 C 1100	RR 650 RC 650	RR 950 RC 950	RR 1100 RC 1100
Max. working width	mm	650	950	1100	650	950	1100
Min. - max. working height	mm	3-160	3-160	3-160	3-160	3-160	3-160
Feed belt speed	m/min	4,5/9	4,5/9	4,5/9	4,5/9	4,5/9	4,5/9
Motor	kW	5,5	7,5	11	2×5,5	2×7,5	2×11
Sanding belt length	mm	1900	1900	1900	1900	1900	1900
Sanding belt width	mm	650	950	1120	650	950	1120
Rubbered roller diameter	mm	120	120	120	120	120	120
Sanding belt speed	m/s	18,5	18,5	18,5	18,5	18,5	18,5
Machine length	mm	1400	1400	1400	1650	1700	1850
Machine width	mm	1220	1520	1670	1220	1520	1670
Machine height	mm	1800	1800	1800	1800	1800	1800
Weight	kg	800	942	960	1050	1360	1450

Standard equipment

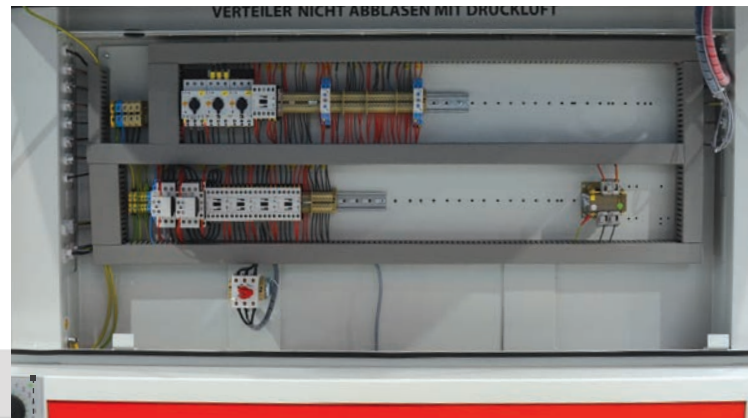
rubbered roller Ø 120 mm, 90Sh
 2nd rubbered roller Ø 120 mm, 45Sh (only for RR,RC)
 length of sanding belt 1900 mm
 motorized lift of work table
 automatic switch star / delta
 lifting of sanding roller for 1st unit - mechanical
 mechanical adjustable pad
 ampermeter for sanding motor
 centering of sanding belt with infrared sensor
 measuring of workpiece height - table positioner
 electronic measuring of table position with LED display
 2 speeds of feeding belt 4,5/9 m/min
 rubbered press rollers
 electromagnetic brake of main motor
 CE electric and safety standard

Optional equipment

motor 10 HP (7,5 kW)
 motor 15 HP (11 kW)
 motor 20 HP (15 kW) only for width 1100
 two speed motor of sanding belt - 9/18 m/s - max. 11 kW
 frequency converter for feeding belt speed 3 - 12 m/min
 frequency converter for main motor - sanding belt speed 3 - 24 m/s
 rubbered roller Ø 120 mm, 30 Sh
 rubbered roller Ø 120 mm, 45 Sh
 rubbered roller Ø 120 mm, 60 Sh
 rubbered roller Ø 120 mm, 90 Sh
 steel grooved roller instead of rubbered Ø 120 mm
 two-position pneumatic timed pad with ascent and descent
 pneumatic timed blower for sanding belt cleaning - 1 pc
 pneumatic timed blower with moving jets for sanding belt cleaning - 1 pc
 automatic centering of feeding belt
 maximum decrease limitation of workpiece - mechanical
 front extension table
 rear extension table
 special voltage 3Ph, 230/ 60Hz



MEASURING OF WORKPIECE HEIGHT
- TABLE POSITIONING



WIRING

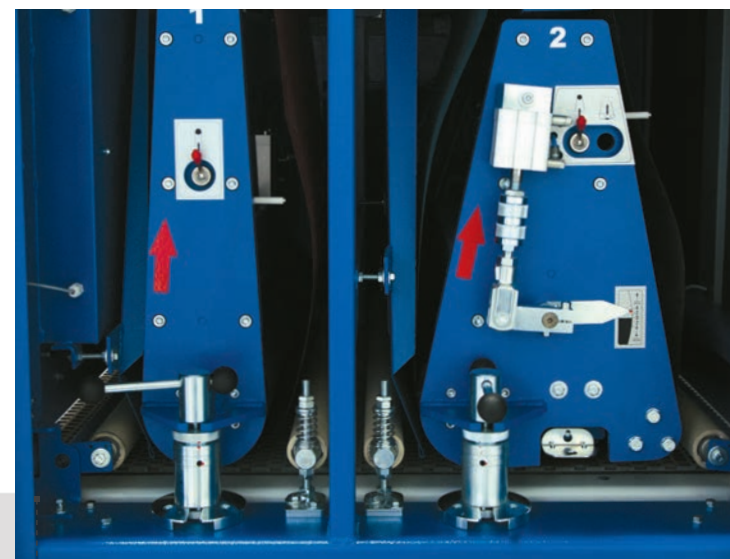


CONTROL
PANEL



Bulldog 5 Wide belt sander

Bulldog 5		R, C, RR, FC, RC, RRR, RRC, RFC
Max. working width	mm	630 - 910 - 1010 - 1100 - 1300
Min. - max. working height	mm	3-160
Feed belt speed	m/min	4,5/9
Motor	kW	7,5-11
Sanding belt length	mm	1900
Sanding belt width	mm	650 - 930 - 1030 - 1120 - 1330
Grooved steel roller diameter	mm	160
Sanding belt speed	m/s	18,5
Machine dimension (L/W/H) R/C	mm	1360/1920/1950
Machine dimension (L/W/H) RR/RC	mm	1710/1920/1950
Machine dimension (L/W/H) RRR/RRC	mm	2410/1920/1950
Weight	kg	1190 - 3400



SANDING UNIT R
SANDING UNIT C

Standard equipment

- rubbered roller D=160 mm, 90Sh
- length of sanding belt 1900 mm
- motorized lift of work-table
- automatic star / delta switching
- ampermeter for sanding motor
- centering of sanding belt with infrared sensor
- table positioner
- electronic measuring of table position with digital display
- two speeds of feeding belt 4,5/9 m/min
- rubberized press rollers
- pneumatic disc brake of main motor
- antinoiseness protection
- CE electric and safety standard

Optional equipment

- 20HP (15kW) motor
- 25HP (18,5 kW) motor
- NC machine operating color Touchscreen 10,4"
- Two speed of sanding belt - 9/18 m/sec
- Two speeds for lift of table
- Steel roller instead of rubbered D=160 mm
- Rubbered roller D=160 mm, 30 Sh
- Rubbered roller D=160 mm, 45 Sh
- Rubbered roller D=160 mm, 60 Sh
- Adaptation for length of sanding belt 2200 mm (high of machine + 200mm)
- Frequence converter of feeding belt speed 3 - 12m/min
- Frequence converter of main motor - belt speed 3-20m/s
- Pressure ledge for grinding short workpiece - 1 couple
- Automatic centering of feeding belt
- Automatic table positioner
- Pneumatic timed blower for cleaning 1 sanding belt
- Pneumatic timed blower with moving jets of 1 aggregate
- Orbital blower of workpiece
- Front extension table
- Rear extension table
- 1st working roller with timed ascent/descent
- Maximum-decrease limitation of workpiece
- Module for clearing of workpiece by rotating textile or nylon brush 140 mm diameter, 1,5 HP
- Vacuum table
- Vacuum pump
- Exhausting clappet D=150 mm (R,C)
- Exhausting clappet D=180 mm (R,C only for width 1300mm)
- Special voltage 3Ph, 230/ 60Hz



MEASURING OF WORKPIECE HEIGHT
- TABLE POSITIONING



CONTROL
PANEL



Bulldog 7 Wide belt sander

Bulldog 7		910	1100	1300
Working width	mm	910	1100	1300
Working height	mm	3-160	3-160	3-160
Feed belt speed	m/min	4,5/9	4,5/9	4,5/9
Sanding belt length	mm	2200	2200	2200
Sanding belt width	mm	930	1120	1320
Grooved steel roller diameter	mm	160-200	160-200	160-200
Sanding belt speed	m/s	18,5	18,5	18,5
Sanding belt motor power	kW	11	11	11
Feed belt two speed motor power	kW	0,58/0,75	0,58/0,75	0,58/0,75
Table elevation motor power	kW	3/N/PE 400V/50Hz	3/N/PE 400V/50Hz	3/N/PE 400V/50Hz
Air consumption with/without blowers	l/min	50/300	50/300	50/300
Operating air pressure	bar	5,5	5,5	5,5
Operating air pressure for belt blower	bar	8	8	8
Exhaust outlet diameter	mm	2x150	2x150	2x150
Exhaust capacity	m ³ /h	3000	3000	3000
Speed of exhausted air	m/s	20	20	20
Machine width	mm	1525	1525	1525
Machine length	mm	1910	1910	1910
Machine height	mm	2010	2010	2010
Weight	kg	1380	1380	1380

Standard equipment

length of sanding belt 2200 mm
automatic star / delta switching
amperimeters for sanding motor
automatic centering of feeding belt
centering of sanding belt with infrared sensor
positioner of sanding units
automatic adjustment of sanding units by set value of workpiece
mechanical correction of working height in accordance of grain size of sanding belt
electronic adjustment of rollers and pad with correction of measuring value in accordance of grain size of sanding belt
automatic adjustment of sanding rollers to set value
two speeds of feeding belt 4,5/9 m/min
rubbered pressure rollers 2 pcs - input and output
pneumatic disc brake of main motor
operating pressurized switch 3,5 - 4,0 bar
adjustment of air pressure for tension of sanding belt
antinoisiness protection
CE electric and safety standard



POSITIONER

Optional equipment

20HP (15kW) motor
25HP (18,5kW) motor
NC machine operating color Touchscreen 10,4"
two speed of sanding belt - 9/18 m/sec
frequency converter of feeding belt speed 3 - 12m/min
frequency converter of main motor - belt speed 3-20 m/s
two speeds for lift of sanding units
steel roller instead of rubbered D=160 mm
steel roller instead of rubbered D=200 mm
rubbered roller D=160 mm, 30 Sh
rubbered roller D=160 mm, 45 Sh
rubbered roller D=160 mm, 60 Sh
rubbered roller D=200 mm 30 Sh
rubbered roller D=200 mm, 45 Sh
rubbered roller D=200 mm, 60 Sh
Maximum-decrease limitation of workpiece
pressure ledge for grinding short workpiece - 1 couple
automatic table positioner
pneumatic timed blower for cleaning 1 sanding belt
pneumatic timed blower with moving jets of 1 aggregate
front extension table
rear extension table
orbital blower of workpiece
Module for clearing of workpiece by rotating textile or nylon brush 140 mm diameter, 1,5 HP
vacuum table
vacuum pump 4Kw
automatic opening of exhausting, D=150 mm (RRR, RRC)
automatic opening of exhausting, D=180 mm (RRR, RRC only for width 1300 mm+Maxx)
special voltage 3Ph, 230/60 Hz



TOUCHSCREEN



WORKING UNIT C

control panel



automatic feed belt tracking



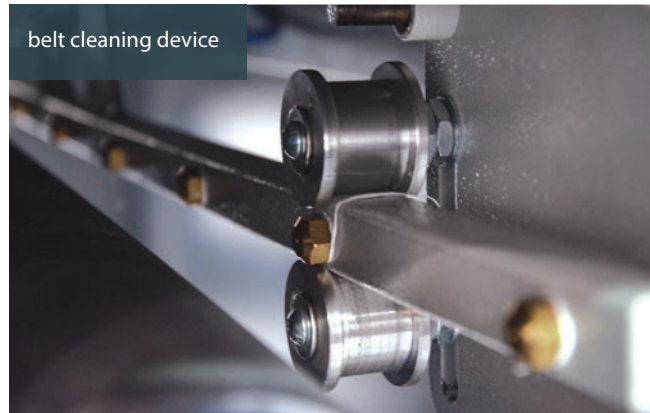
unit C



pneumatic pad



belt cleaning device



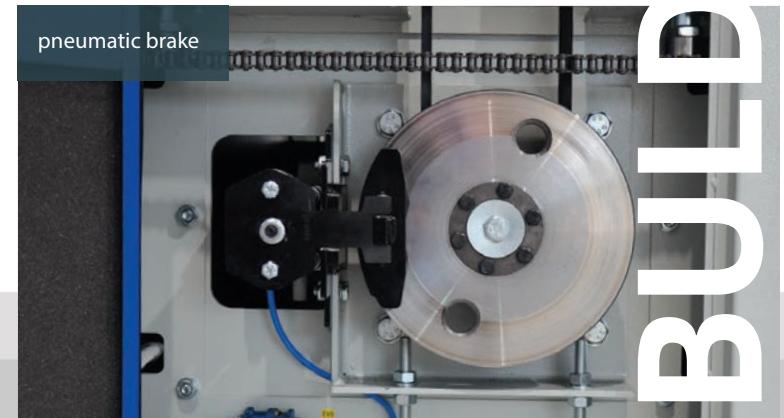
FRL unit



belt oscillation

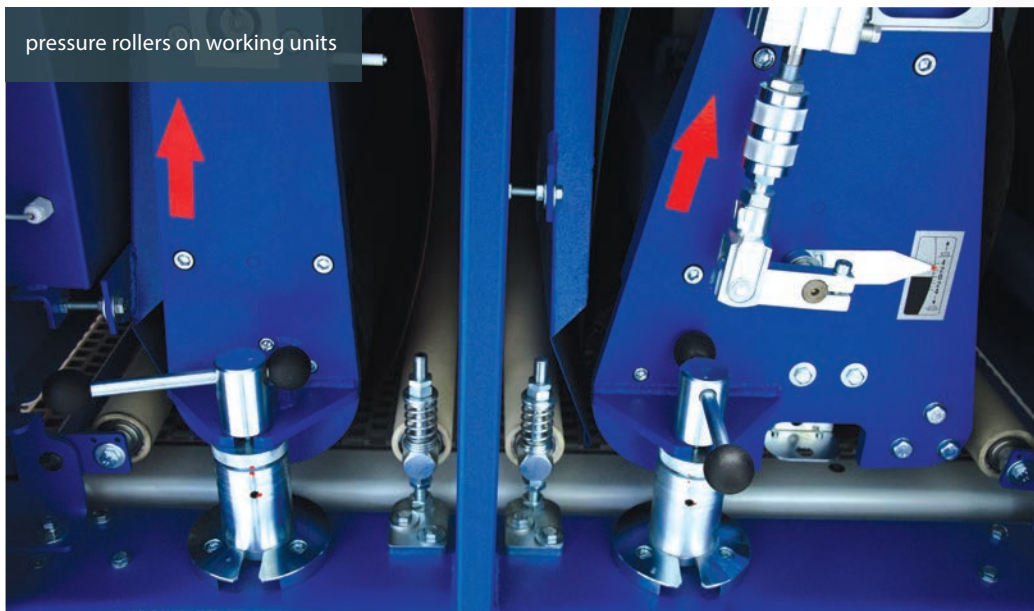


pneumatic brake



BUILD OGG3

pressure rollers on working units



input roller of table



units R and C



control panel



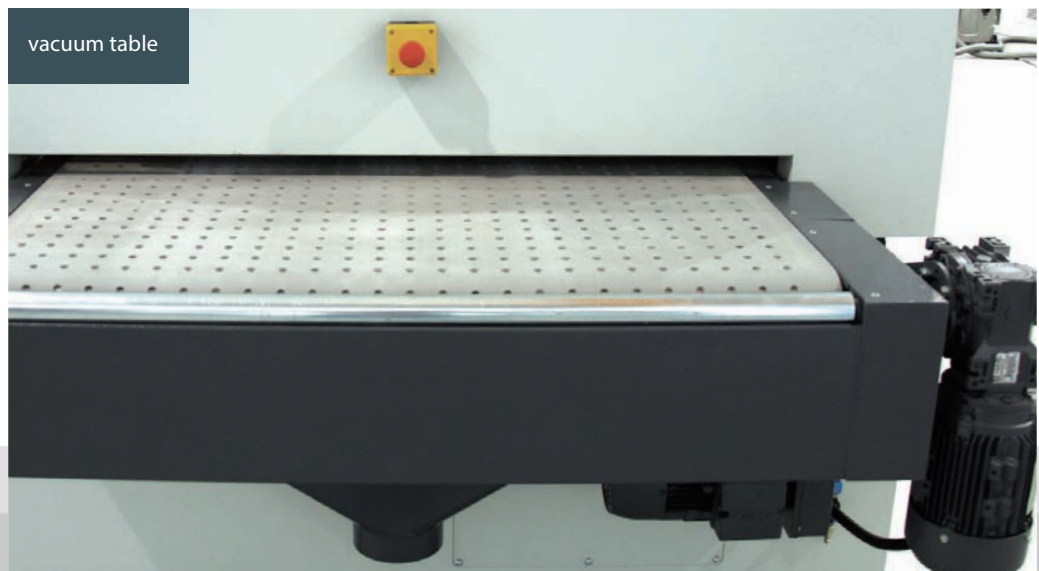
BUILDING 5



brushing module



touchscreen



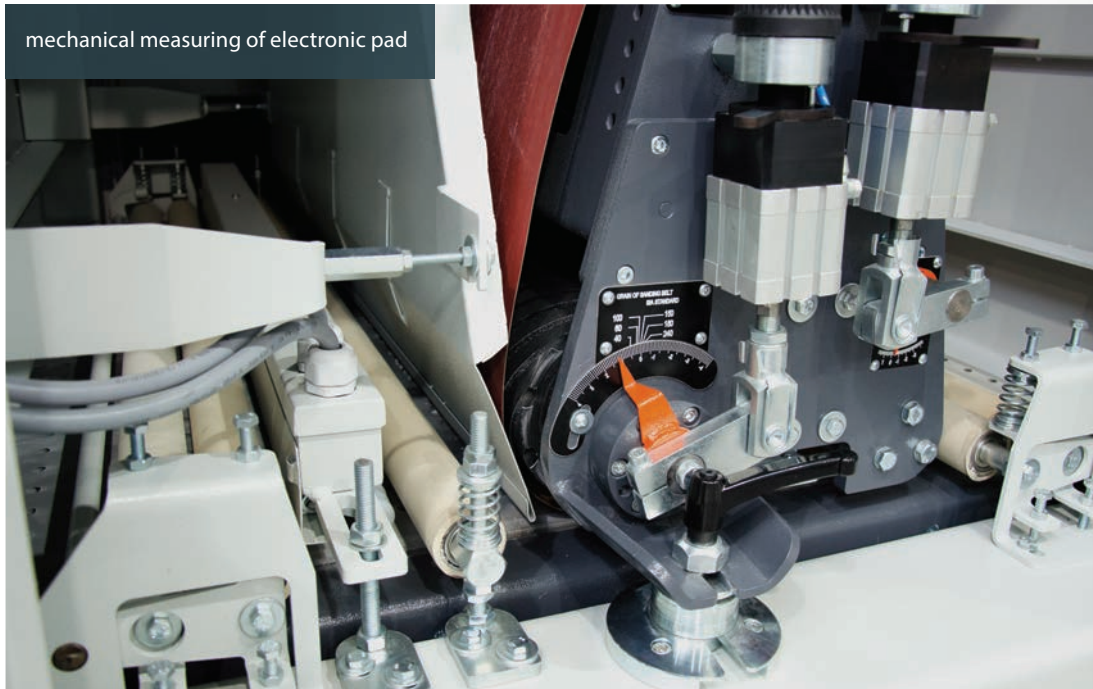
vacuum table



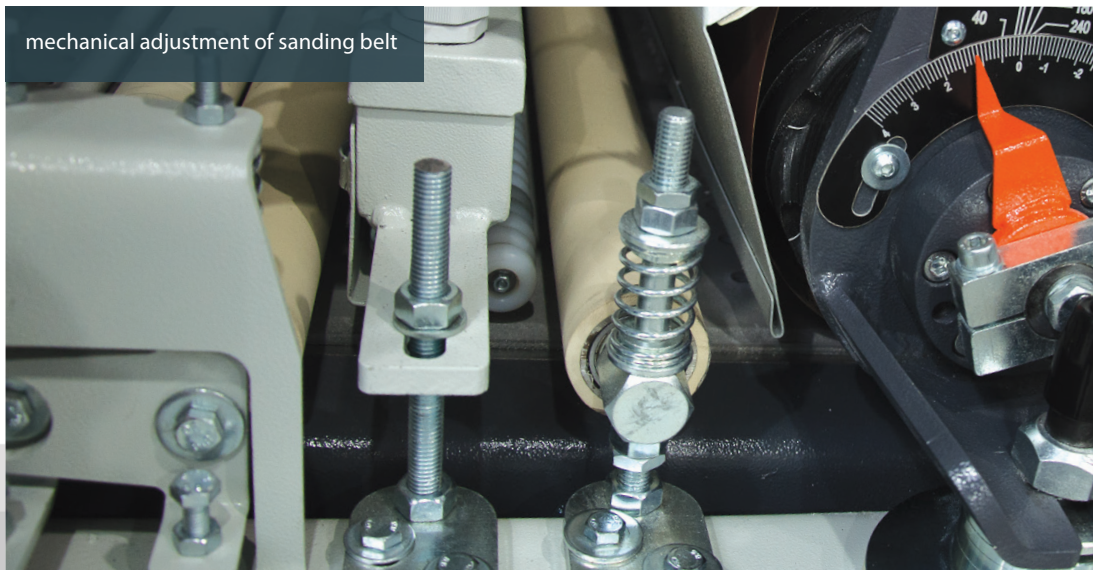
tensioning roller

BULLDOG 7

mechanical measuring of electronic pad



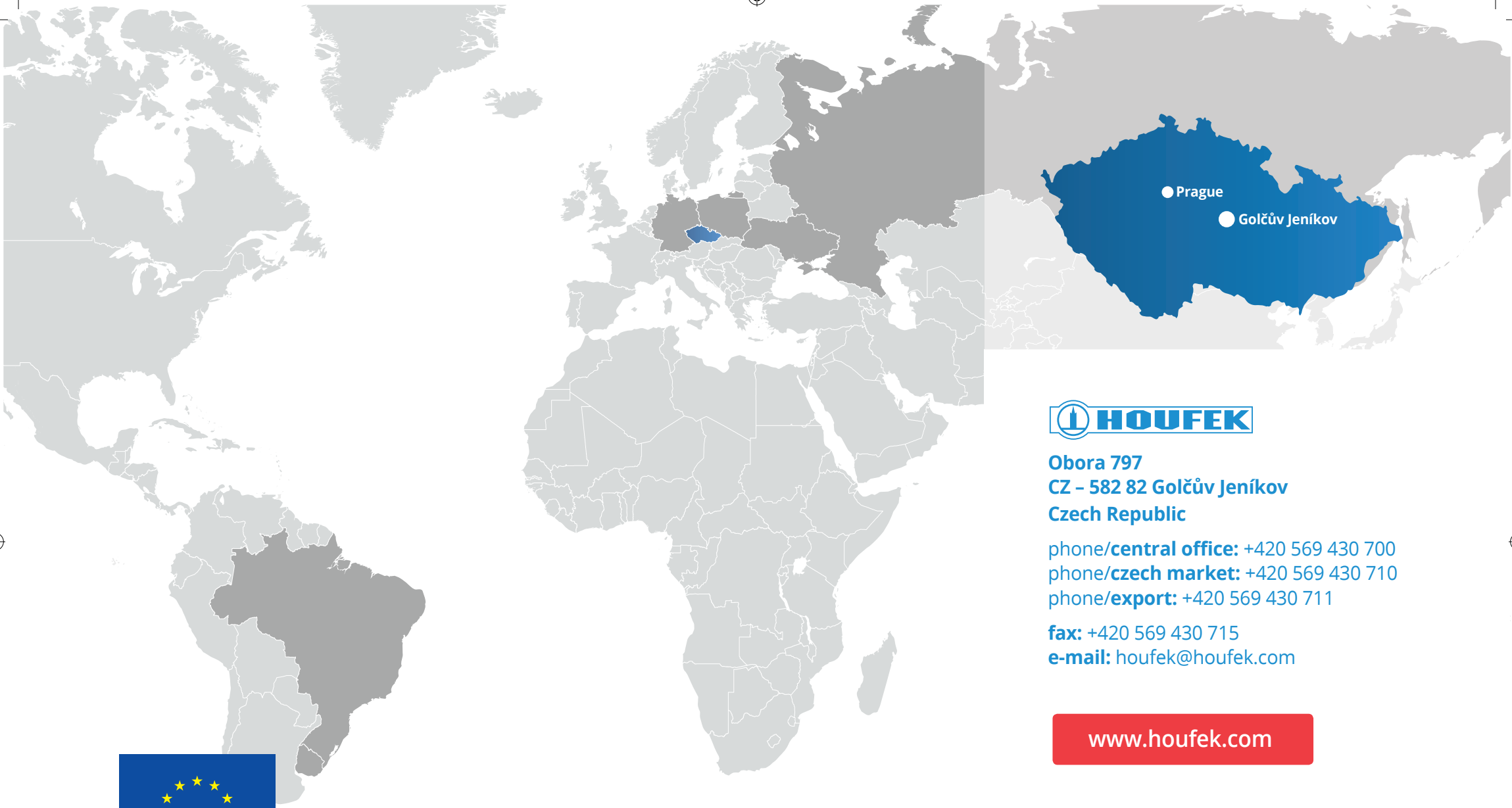
mechanical adjustment of sanding belt



tension and control of tension roller



BULLDOG 7



Obora 797
CZ - 582 82 Golčův Jeníkov
Czech Republic

phone/**central office**: +420 569 430 700
phone/**czech market**: +420 569 430 710
phone/**export**: +420 569 430 711

fax: +420 569 430 715
e-mail: houfek@houfek.com

www.houfek.com



EUROPEAN UNION
EUROPEAN REGIONAL DEVELOPMENT FUND
INVESTMENT IN YOUR FUTURE